

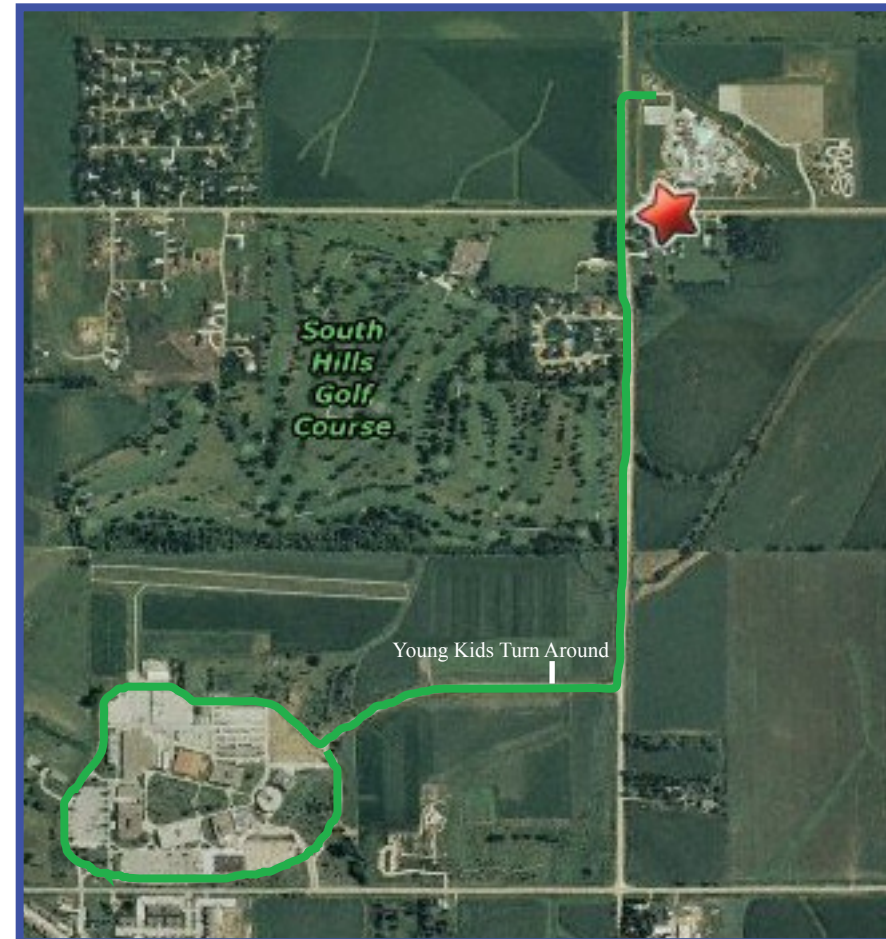
Younger Kids Run Route



Older Kids Run Route



Bicycle Route



Spectator information:

You will be able to enter the park to watch the swim portion of the triathlon.

No parents or spectators will be allowed in the transition area.

Parking will be in the main Lost Island parking lot. Please park at the center of the lot so spectators will be able to see the runners.

The bicycle section of the race will take riders out of the Park, along Hess road. The younger racers will turn around near the entrance of Hawkeye Community College, while older racers will follow Campus View Drive around Hawkeye, and back to the Park.